

# 5th lesson - Autocad

18<sup>th</sup> October, 2022

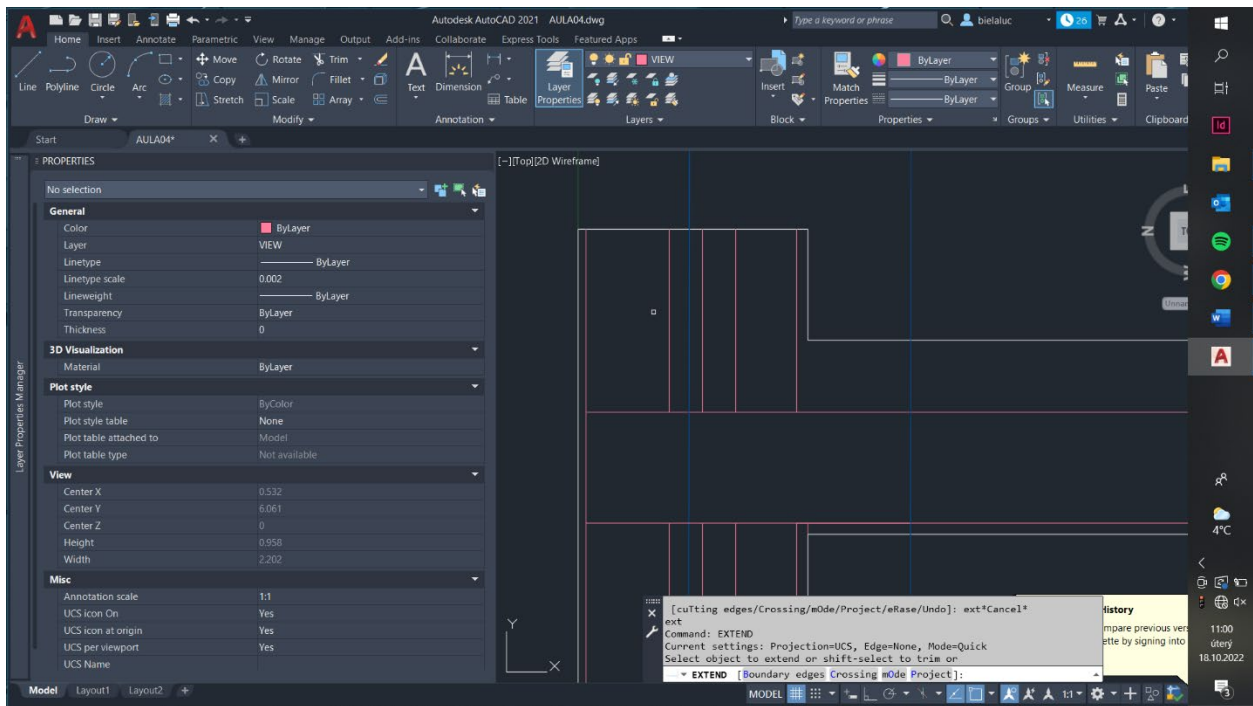
First half of the lesson - theory

- Color code in drawing
  - Black - current construction, that stays
  - Red - new construction
  - Yellow - demolition
  - Blue - what we want to legalize
  
- The right way to do dimension lines
  - With sanitary - always on the axis/where it has the plumbing
- Represent the layers of walls in the drawings - for plaster/tiles 2 cm (viz. picture 1)
- At least 6 cm of insulation

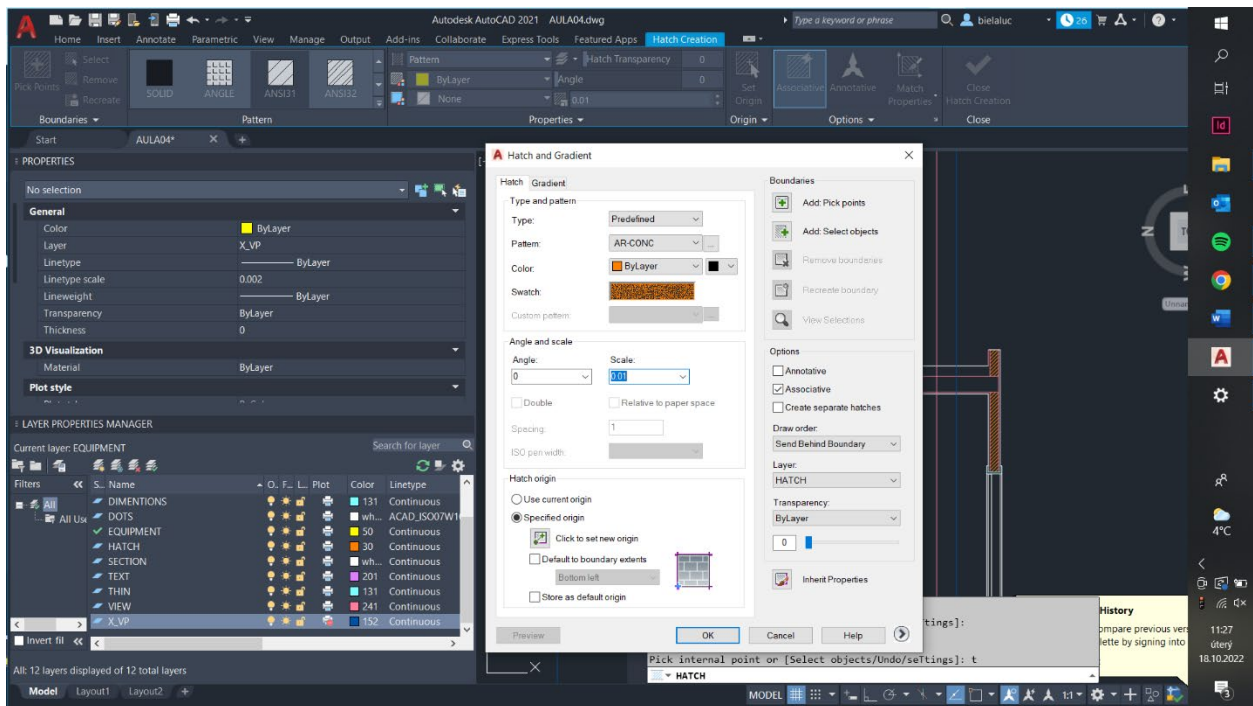
## Commands:

- EXTEND - to join to lines/objects, click on the line we want to extend
- H=HATCH - press T for settings (viz. picture 2)
  - Can change the hatch pattern, scale, orientation, how to fill objects (viz. picture 3)
  - Layer - HATCH - to make all hatches on this layer
- IMAGE ATTACH - to put an image to autocad, can select any picture from our computer
- DRAW ORDER - to manage the order of drawings and picture, to move up and down in order
- SCALE - to change the scale of drawing, can change it according to a number or can choose reference points to which we want to scale it
- IMAGE CLIP - to crop picture, select picture, than we can choose a boundary - either draw it or select a polygon, rectangle ,.. (viz. picture 4)

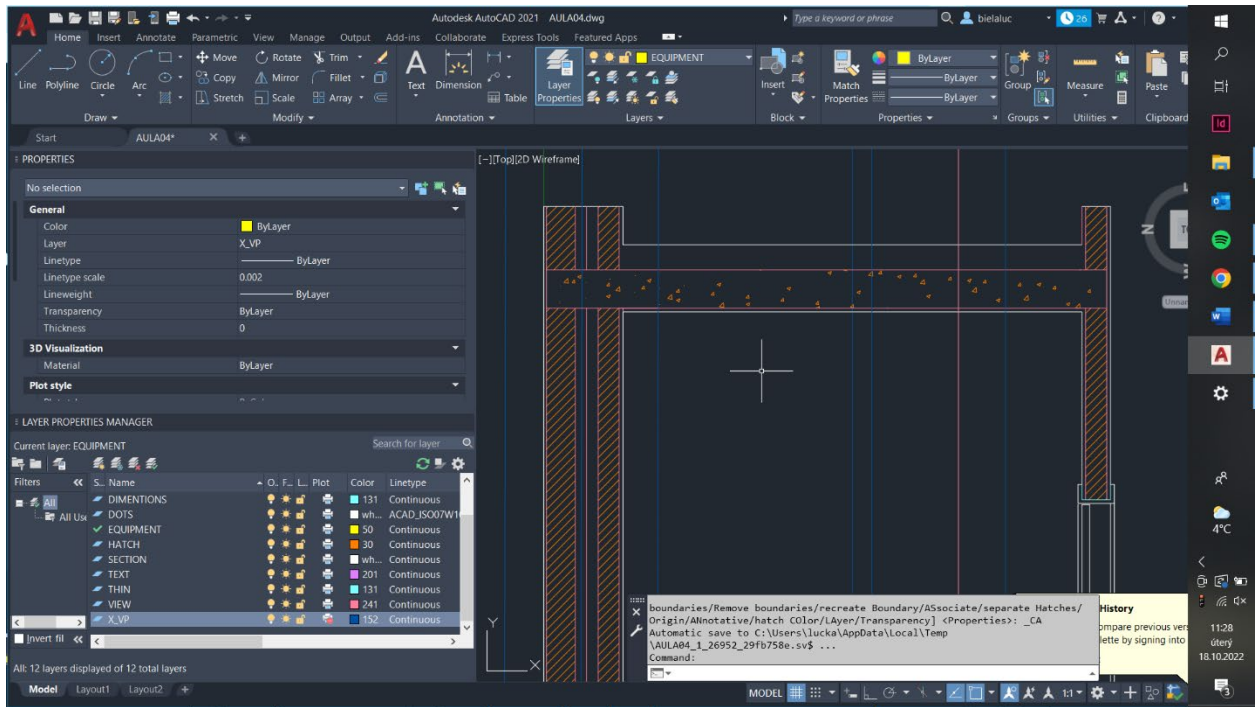
Picture 1:



Picture 2:



Picture 3:



Picture 4:

